

Hua Hin Thailand | 7 nights | 5 rounds

Considered one of the best spots for golf in Asia, Hua Hin is a popular travel choice for those wanting top golf and superb hospitality. This package includes 5 games including big names Banyan and Black Mountain staying in great accommodation in the town centre. Any enquires for Thailand including other great regions such as Bangkok, Phuket and Pattaya, contact GOLFSelect your groups needs. Minimum requirement 8 golfers. Limited to 16 golfers.



At a Glance

Package	7 nights and 5 games
When	2024 season
Accommodation	7 nights at Amari Hua Hin inc breakfast
Golf	5 games of golf (including shared cart and caddy) Black Mountain Golf Club Banyan Golf Club Springfield Royal Country Club Palm Hills Golf Resort and Country Club Majestic Creek Country Club
Drive	All transfers from airport to golf and hotel included
Pricing	from AUD \$1,990 per person (twin share) **All pricing based on 8 golfers travelling together and during low season April to October**
Other	<ul style="list-style-type: none">• Customise your choice of hotels and golf rounds.• Include some great sightseeing

Day	Golf	Accommodation
Day 1	Arrive	Amari Hua Hin
Day 2	Springfield Royal Country Club	Amari Hua Hin
Day 3	Palm Hills Golf Resort and Country Club	Amari Hua Hin
Day 4		Amari Hua Hin
Day 5	Majestic Creek Country Club	Amari Hua Hin
Day 6	Banyan Golf Club	Amari Hua Hin

Hua Hin Thailand | 7 nights | 5 rounds



Day	Golf	Accommodation
Day 7	Black Mountain Golf Club	Amari Hua Hin
Day 8	Depart	

Welcome

The best of Hua Hin, Thailand

Package Inclusions

- 5 rounds of golf in Hua Hin inc shared cart and caddy
- 7 nights' accommodation in Hua Hin inc daily breakfast
- All airport, land, and golf course transfers in a private VIP van
- Meet & Greet on arrival

Package Exclusions

- International flights, airport taxes,
- Travel visa
- Personal items, meals (other than those mentioned), gratuities
- Minimum requirement 8 golfers.
- Limited to 16 golfers.


Minimum requirement 8 golfers.


Limited to 16 golfers.


From the team at GOLFSelect.

Itinerary Day-by-Day

Day 1

 Own arrangements

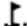
 Approx travel time 3 hours 30 mins

 **Amari Hua Hin** (7 nights including breakfast)

Sophisticated comfort and exclusive service await you at Amari Hua Hin. Situated near the glittering Gulf of Thailand, the resort offers thoughtful accommodation in an idyllic garden setting. Just two and a half hours drive from Bangkok, Hua Hin has long been a magnet for Thai and foreign holiday makers. Amari Hua Hin's contemporary architecture models itself on the rhythm of the waves and stands amid the lush landscaping of tropical gardens.

Day 2

 Approx travel time 40 mins

 **Springfield Royal Country Club** (18 holes of golf inc shared cart and caddy)

The traditional Jack Nicklaus designed Springfield Royal Country Club located off the Hua Hin bypass road is a top Hua Hin golf course and an excellent cost-effective alternative to Banyan and Black Mountain. Springfield has been designed to meet the high demands of a championship golf course and yet it remains an enjoyable challenge for golfers of all standards. Each hole has five tees to play from, but only golf professionals should attempt the back Jack tees.

 Approx travel time 40 mins

 **Amari Hua Hin**

Sophisticated comfort and exclusive service await you at Amari Hua Hin. Situated near the glittering Gulf of Thailand, the resort offers thoughtful accommodation in an idyllic garden setting. Just two and a half hours drive from Bangkok, Hua Hin has long been a magnet for Thai and foreign holiday makers. Amari Hua Hin's contemporary architecture models itself on the rhythm of the waves and stands amid the lush landscaping of tropical gardens.

Day 3

 Approx travel time 20 mins

 **Palm Hills Golf Resort and Country Club** (18 holes of golf inc shared cart and caddy)

Palm Hills Golf Club located close to Hua Hin center the Hua Hin airport, is in the lower foothills. It was the first international standard Hua Hin golf course and opened in 1992. The following year Palm Hills hosted to the inaugural Thailand World Pro-Am tournament.

 Approx travel time 20 mins

Amari Hua Hin


Sophisticated comfort and exclusive service await you at Amari Hua Hin. Situated near the glittering Gulf of Thailand, the resort offers thoughtful accommodation in an idyllic garden setting. Just two and a half hours drive from Bangkok, Hua Hin has long been a magnet for Thai and foreign holiday makers. Amari Hua Hin's contemporary architecture models itself on the rhythm of the waves and stands amid the lush landscaping of tropical gardens.

Day 4

Amari Hua Hin

Sophisticated comfort and exclusive service await you at Amari Hua Hin. Situated near the glittering Gulf of Thailand, the resort offers thoughtful accommodation in an idyllic garden setting. Just two and a half hours drive from Bangkok, Hua Hin has long been a magnet for Thai and foreign holiday makers. Amari Hua Hin's contemporary architecture models itself on the rhythm of the waves and stands amid the lush landscaping of tropical gardens.

Day 5

 Approx travel time 30 mins

Majestic Creek Country Club (18 holes of golf inc shared cart and caddy)

Majestic Creek is a 27 hole gem, lying in beautiful countryside, just 25 minutes outside of the Royal town of Hua Hin. Recent renovations and re-laying of greens has transformed this sleeping giant into one of the best golfing experiences in this renowned golfing area.

 Approx travel time 30 mins

Amari Hua Hin

Sophisticated comfort and exclusive service await you at Amari Hua Hin. Situated near the glittering Gulf of Thailand, the resort offers thoughtful accommodation in an idyllic garden setting. Just two and a half hours drive from Bangkok, Hua Hin has long been a magnet for Thai and foreign holiday makers. Amari Hua Hin's contemporary architecture models itself on the rhythm of the waves and stands amid the lush landscaping of tropical gardens.

Day 6

 Approx travel time 15 mins

Banyan Golf Club (18 holes of golf inc shared cart and caddy)

The Thai course architect Pirapon Namatra laid out the course at Banyan Golf Club in Hua Hin. Many consider the views from the short par three 15th tee across the ocean to Sing Toh island to be worth the green fee alone.

 Approx travel time 15 mins

Amari Hua Hin

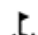
Sophisticated comfort and exclusive service await you at Amari Hua Hin. Situated near the glittering Gulf of Thailand, the resort offers thoughtful accommodation in an idyllic garden setting. Just two and a half hours drive from Bangkok, Hua Hin has long been a magnet for Thai and foreign holiday makers. Amari Hua Hin's contemporary architecture models itself on the rhythm of the waves and stands amid the lush landscaping of tropical gardens.

Day 7


Hua Hin Thailand | 7 nights | 5 rounds




 Approx travel time 30 mins


 **Black Mountain Golf Club** (18 holes of golf inc shared cart and caddy)
Designed by Phil Ryan of Pacific Coast Design, the course at Black Mountain Golf Club is situated 140 miles south of Bangkok, near the small town of Hua Hin. Opening in 2007, it quickly established itself as one of the best 18-hole layouts in Thailand.

 Approx travel time 30 mins

 **Amari Hua Hin**
Sophisticated comfort and exclusive service await you at Amari Hua Hin. Situated near the glittering Gulf of Thailand, the resort offers thoughtful accommodation in an idyllic garden setting. Just two and a half hours drive from Bangkok, Hua Hin has long been a magnet for Thai and foreign holiday makers. Amari Hua Hin's contemporary architecture models itself on the rhythm of the waves and stands amid the lush landscaping of tropical gardens.

Day 8

 Approx travel time 3 hours 30 mins

 Own arrangements

Golf Courses

Banyan Golf Club



68/35 Mooban Hua Na, Tambol Nong Gae, Hua Hin,
Prachuabkirikhan, THA, 77110

Thailand

Region: Thailand



The Thai course architect Pirapon Namatra laid out the course at Banyan Golf Club in Hua Hin. Many consider the views from the short par three 15th tee across the ocean to Sing Toh island to be worth the green fee alone.

Black Mountain Golf Club



565 Moo7, Nong Hieng Road, Hin LekFai, Hua Hin,
Prachuabkirikhan, THA, 77110

Thailand

Region: Thailand



Designed by Phil Ryan of Pacific Coast Design, the course at Black Mountain Golf Club is situated 140 miles south of Bangkok, near the small town of Hua Hin. Opening in 2007, it quickly established itself as one of the best 18-hole layouts in Thailand.

Majestic Creek Country Club



164 moo 4, Tubtai Hua Hin, Prachuabkirikhan, THA, 77110
Thailand
Region: Thailand



Majestic Creek is a 27 hole gem, lying in beautiful countryside, just 25 minutes outside of the Royal town of Hua Hin. Recent renovations and re-laying of greens has transformed this sleeping giant into one of the best golfing experiences in this renowned golfing area.

Palm Hills Golf Resort and Country Club



1444 Petchkasem Rd, Cha-am, Petchburi, THA, 76120
Thailand
Region: Thailand



Palm Hills Golf Club located close to Hua Hin center the Hua Hin airport, is in the lower foothills. It was the first international standard Hua Hin golf course and opened in 1992. The following year Palm Hills hosted to the inaugural Thailand World Pro-Am tournament.

Springfield Royal Country Club



208, Moo 2, Sampraya, Cha-am, Phetchaburi, THA, 76120
Thailand
Region: Thailand



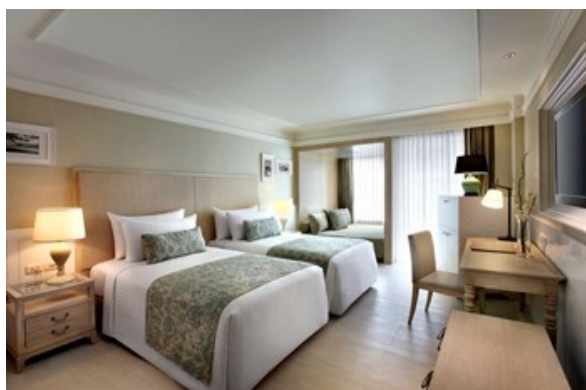
The traditional Jack Nicklaus designed Springfield Royal Country Club located off the Hua Hin bypass road is a top Hua Hin golf course and an excellent cost-effective alternative to Banyan and Black Mountain. Springfield has been designed to meet the high demands of a championship golf course and yet it remains an enjoyable challenge for golfers of all standards. Each hole has five tees to play from, but only golf professionals should attempt the back Jack tees.

Accommodation

Amari Hua Hin



117/74 Takiab Road, Nongkae, Hua Hin, THA, 77110
Thailand
Region: Thailand



Sophisticated comfort and exclusive service await you at Amari Hua Hin. Situated near the glittering Gulf of Thailand, the resort offers thoughtful accommodation in an idyllic garden setting. Just two and a half hours drive from Bangkok, Hua Hin has long been a magnet for Thai and foreign holiday makers. Amari Hua Hin's contemporary architecture models itself on the rhythm of the waves and stands amid the lush landscaping of tropical gardens.

About Us

GOLFSelect is a **golf holiday** specialist. Our relationships with Australia's best golf courses, plus our extensive international network of golf travel partners, allows us to organise unique and never-to-be-forgotten golf holidays both within **Australia** and around the **world**.

Enquire Now

Want more information? Get in touch!

Address	PO Box 7350, Beaumaris, Victoria, 3193, AUSTRALIA
Phone	61 3 9563 6776
Email	travel@golfselect.com.au