

Australia and New Zealand | 17 day Sampler



Australia and New Zealand | 17 day Sampler

Helping you experience the best in Australia and New Zealand with golf on the best courses both countries have to offer and some fantastic sightseeing along the way!



Australia and New Zealand | 17 day Sampler



At a Glance

When	Flexible dates as required
Package	16 nights, 7 courses
Accommodation	3 nights at Radisson Blu Plaza Hotel, Sydney 3 nights at Barnbougle Lost Farm, Tasmania 4 nights at The Langham, Melbourne 3 nights at Mangapapa Hotel, Hawkes Bay, NZ 3 nights at The Lodge at Kauri Cliffs, Bay of Islands, NZ
Golf	7 games of golf at: The New South Wales GC Barnbougle Lost Farm Barnbougle Dunes Kingston Heath GC The Royal Melbourne GC (West Course) Cape Kidnappers* Kauri Cliffs* *All day golf
Pricing	Price on application

Day	Golf	Accommodation
Day 1	Arrive	Radisson Blu Plaza Hotel
Day 2	The New South Wales Golf Club	Radisson Blu Plaza Hotel
Day 3		Radisson Blu Plaza Hotel
Day 4		Barnbougle - Lost Farm

Australia and New Zealand | 17 day Sampler



Day	Golf	Accommodation
Day 5	Barnbougles Lost Farm	Barnbougles - Lost Farm
Day 6		Barnbougles - Lost Farm
Day 7	Barnbougles Dunes Golf Links	The Langham, Melbourne
Day 8		The Langham, Melbourne
Day 9	Kingston Heath Golf Club	The Langham, Melbourne
Day 10	The Royal Melbourne GC (West Course)	The Langham, Melbourne
Day 11		Mangapapa Petit Hotel
Day 12	Cape Kidnappers Golf Resort	Mangapapa Petit Hotel
Day 13		Mangapapa Petit Hotel
Day 14		The Lodge at Kauri Cliffs
Day 15		The Lodge at Kauri Cliffs
Day 16	Kauri Cliffs	The Lodge at Kauri Cliffs
Day 17	Depart	

Australia and New Zealand | 17 day Sampler



Welcome

Our 17 day Australia and New Zealand sampler will give you a taste of some of the great golf courses of these two countries and have you wanting to come back and play more (and believe you me we can offer you plenty of additional golf experiences for next time).

The itinerary starts in the Olympic city where you play the best course in Sydney - the spectacular NSW Golf Club located at La Perouse. From here you head to Melbourne and an veritable feast of wonderful golf. Over the next six days you will play three of the famed Melbourne Sandbelt courses and then head down to the golf rich Mornington Peninsula where you will experience another two highly regarded courses.

From here you cross the Tasman and over to New Zealand where some truly spectacular cliff top courses - Kauri Cliffs and Cape Kidnappers awaits you. And at the end of this you have to head home where no doubt planning will have already begun for your next trip "Down Under".

Price on Application

We look forward in tailoring this golf holiday package to suit your needs!

With thanks,

GOLFSelect Travel Team.

Itinerary Day-by-Day

Day 1

Radisson Blu Plaza Hotel

Enjoy staying within walking distance of popular Sydney attractions like Circular Quay, the Royal Botanical Gardens and the Sydney Harbour Bridge. Located just off the hotel lobby, the Fax Bar is the perfect setting to join friends or colleagues for a classic cocktail. Discover enticing entrees on chef Brent Savage's innovative menu served in the refined setting of our award-winning restaurant

Day 2

The New South Wales Golf Club (16 golfers with shared motorised carts included.)

The NSW Golf Club is rated in the top 50 golf courses in the world. In fact, it is the only Sydney Course rated in the top 100 best golf courses listing. The character of the course is unique, a links style course set amongst the hills and valleys that hug the rugged Pacific Ocean coastline boasting magnificent ocean views as backdrop.

Radisson Blu Plaza Hotel


Enjoy staying within walking distance of popular Sydney attractions like Circular Quay, the Royal Botanical Gardens and the Sydney Harbour Bridge. Located just off the hotel lobby, the Fax Bar is the perfect setting to join friends or colleagues for a classic cocktail. Discover enticing entrees on chef Brent Savage's innovative menu served in the refined setting of our award-winning restaurant

Day 3

Radisson Blu Plaza Hotel

Enjoy staying within walking distance of popular Sydney attractions like Circular Quay, the Royal Botanical Gardens and the Sydney Harbour Bridge. Located just off the hotel lobby, the Fax Bar is the perfect setting to join friends or colleagues for a classic cocktail. Discover enticing entrees on chef Brent Savage's innovative menu served in the refined setting of our award-winning restaurant

Day 4

 Hear the legends and history of Sydney as you stroll the shoreline of the sparkling Sydney Harbour and wander down hidden alleyways, shady courtyards, and cobbled lanes. Discover what makes The Rocks tick on a Sydney heritage walk.

Barnboughe Lost Farm

Barnboughe Lost Farm has two types of accommodation. The Queen Suites are an open plan hotel style room with a queen size bed, bathroom, tea and coffee making facilities. The Double Queen Suites are an open plan hotel style room with 2 queen size beds (in the same room), tea and coffee making facilities and a central bathroom. Both room types have views over the spectacular golf course or pristine Andersons Bay.

Day 5

Australia and New Zealand | 17 day Sampler



Barnboughe Lost Farm (16 golfers with pull buggies included.)

Lost Farm complements the natural landscape in which it is located. Featuring 20 holes, all of which are playable in any one round, the course layout tracks along the coast and inland amongst sand dunes. Strategic bunkering and undulating greens, combined with wide fairways make for a course which offers an exciting challenge for all golfers.

Barnboughe Lost Farm

Barnboughe Lost Farm has two types of accommodation. The Queen Suites are an open plan hotel style room with a queen size bed, bathroom, tea and coffee making facilities. The Double Queen Suites are an open plan hotel style room with 2 queen size beds (in the same room), tea and coffee making facilities and a central bathroom. Both room types have views over the spectacular golf course or pristine Andersons Bay.

Day 6

Barnboughe Lost Farm

Barnboughe Lost Farm has two types of accommodation. The Queen Suites are an open plan hotel style room with a queen size bed, bathroom, tea and coffee making facilities. The Double Queen Suites are an open plan hotel style room with 2 queen size beds (in the same room), tea and coffee making facilities and a central bathroom. Both room types have views over the spectacular golf course or pristine Andersons Bay.

Day 7

Barnboughe Dunes Golf Links (16 golfers with pull buggies included.)

Barnboughe Dunes Golf Links is the creation of a small group of dreaming golfers who saw the potential to build the most amazing golf course on the small island of Tasmania a short jump from the mainland of Australia. The golf course meanders through towering dunes and along the beach, where the roar of the ocean and a salty breeze will embrace golfers, plotting their way around one of the world's most natural golf courses.

The Langham, Melbourne

The Langham, Melbourne affords five star service and quality in a five star location - the south bank of the Yarra River. Nestled on the south bank of the Yarra River, the hotel is within easy reach of the city's business district, fashion, shopping, sport, parks and gardens, al fresco restaurants, cafes and nightlife.

Day 8

The Langham, Melbourne

The Langham, Melbourne affords five star service and quality in a five star location - the south bank of the Yarra River. Nestled on the south bank of the Yarra River, the hotel is within easy reach of the city's business district, fashion, shopping, sport, parks and gardens, al fresco restaurants, cafes and nightlife.

Day 9

Kingston Heath Golf Club (16 golfers with pull buggies included.)

Kingston Heath Golf Club is universally regarded as one of the best manicured courses in Australia and arguably the world. Its strategic bunkering and clever use of dips and hollows fools the non observant golfer and any deviation from the fairway is generally met with a challenging recovery. The course was built on a compact parcel of land resulting in some of the best short par 4's and world class par 3 holes.

Australia and New Zealand | 17 day Sampler



The Langham, Melbourne

The Langham, Melbourne affords five star service and quality in a five star location - the south bank of the Yarra River. Nestled on the south bank of the Yarra River, the hotel is within easy reach of the city's business district, fashion, shopping, sport, parks and gardens, al fresco restaurants, cafes and nightlife.

Day 10

The Royal Melbourne GC (West Course) (16 golfers with pull buggies included.)

The Royal Melbourne Golf Club is a 36 hole private members club located in the heart of the world famous Melbourne Sandbelt golf region. The West Course is regularly rated as the number one rated golf course in Australia (and was recently ranked number 6 in the world) and was designed by world renowned golf course architect Dr Alistair MacKenzie. The natural peaks and troughs in the terrain have been used to maximum benefit with strategically designed and memorable holes throughout.

The Langham, Melbourne

The Langham, Melbourne affords five star service and quality in a five star location - the south bank of the Yarra River. Nestled on the south bank of the Yarra River, the hotel is within easy reach of the city's business district, fashion, shopping, sport, parks and gardens, al fresco restaurants, cafes and nightlife.

Day 11

Mangapapa Petit Hotel

Mangapapa Petit Hotel was originally built in 1885 and is regarded as one of Hawke Bays most prestigious properties. Located on 20 acres of lush, manicured gardens, the homestead has recently undergone an extensive refurbishment bringing more modern and luxurious facilities to the hotel.

Day 12

Cape Kidnappers Golf Resort (16 golfers with shared motorised carts included.)

Cape Kidnappers is a Tom Doak designed golf course which is amongst the world's most spectacular courses. The clever use of the layout is best seen from the air where Doak has used the natural landscape to craft some magnificent, memorable, and challenging golf holes. However, the Cape Kidnappers experience starts from the moment you drive in the entrance gate. What follows is a 10-kilometer drive (yes that is correct) leading you up to the shearing shed designed clubhouse. The long drive helps to build the anticipation of the day ahead as one passes through a pine plantation, a working cattle farm where sheep abound, across streams and along roads cut out from sheer faced cliffs.

Cape Kidnappers Golf Resort (16 golfers with shared motorised carts included.)

Cape Kidnappers is a Tom Doak designed golf course which is amongst the world's most spectacular courses. The clever use of the layout is best seen from the air where Doak has used the natural landscape to craft some magnificent, memorable, and challenging golf holes. However, the Cape Kidnappers experience starts from the moment you drive in the entrance gate. What follows is a 10-kilometer drive (yes that is correct) leading you up to the shearing shed designed clubhouse. The long drive helps to build the anticipation of the day ahead as one passes through a pine plantation, a working cattle farm where sheep abound, across streams and along roads cut out from sheer faced cliffs.

Australia and New Zealand | 17 day Sampler



Mangapapa Petit Hotel

Mangapapa Petit Hotel was originally built in 1885 and is regarded as one of Hawke Bays most prestigious properties. Located on 20 acres of lush, manicured gardens, the homestead has recently undergone an extensive refurbishment bringing more modern and luxurious facilities to the hotel.

Day 13

Mangapapa Petit Hotel

Mangapapa Petit Hotel was originally built in 1885 and is regarded as one of Hawke Bays most prestigious properties. Located on 20 acres of lush, manicured gardens, the homestead has recently undergone an extensive refurbishment bringing more modern and luxurious facilities to the hotel.

Day 14

Rosewood Kauri Cliffs

Kauri Cliffs consists of eleven outlying guest cottages, each with two guest suites providing twenty-two accommodation units at Kauri Cliffs.

Day 15

Rosewood Kauri Cliffs

Kauri Cliffs consists of eleven outlying guest cottages, each with two guest suites providing twenty-two accommodation units at Kauri Cliffs.

Day 16

Kauri Cliffs (16 golfers with shared motorised carts included.)

Kauri Cliffs is one of those surreal golf experiences that avid golfers should experience at least once in their lifetime. Fifteen holes view the Pacific Ocean, six of which are played alongside cliffs which plunge to the sea. The beautiful inland holes wind through marsh, forest and farmland.

Kauri Cliffs (16 golfers with shared motorised carts included.)

Kauri Cliffs is one of those surreal golf experiences that avid golfers should experience at least once in their lifetime. Fifteen holes view the Pacific Ocean, six of which are played alongside cliffs which plunge to the sea. The beautiful inland holes wind through marsh, forest and farmland.

Rosewood Kauri Cliffs

Kauri Cliffs consists of eleven outlying guest cottages, each with two guest suites providing twenty-two accommodation units at Kauri Cliffs.

Day 17

Golf Courses

Cape Kidnappers Golf Resort



448 Clifton Road, Te Awanga, Hawke's Bay, NZNORTH,
000
New Zealand
Region: Hawke's Bay



Cape Kidnappers is a Tom Doak designed golf course which is amongst the world's most spectacular courses. The clever use of the layout is best seen from the air where Doak has used the natural landscape to craft some magnificent, memorable, and challenging golf holes. However, the Cape Kidnappers experience starts from the moment you drive in the entrance gate. What follows is a 10-kilometer drive (yes that is correct) leading you up to the shearing shed designed clubhouse. The long drive helps to build the anticipation of the day ahead as one passes through a pine plantation, a working cattle farm where sheep abound, across streams and along roads cut out from sheer faced cliffs.

Kingston Heath Golf Club



Kingston Road, Cheltenham, VIC, 3192
Australia
Region: Melbourne Sandbelt



Kingston Heath Golf Club is universally regarded as one of the best manicured courses in Australia and arguably the world. Its strategic bunkering and clever use of dips and hollows fools the non observant golfer and any deviation from the fairway is generally met with a challenging recovery. The course was built on a compact parcel of land resulting in some of the best short par 4's and world class par 3 holes.

The Royal Melbourne GC (West Course)



THE ROYAL MELBOURNE GOLF CLUB

Cheltenham Road, Black Rock, VIC, 3193

Australia

Region: Melbourne Sandbelt



The Royal Melbourne Golf Club is a 36 hole private members club located in the heart of the world famous Melbourne Sandbelt golf region. The West Course is regularly rated as the number one rated golf course in Australia (and was recently ranked number 6 in the world) and was designed by world renowned golf course architect Dr Alistair MacKenzie. The natural peaks and troughs in the terrain have been used to maximum benefit with strategically designed and memorable holes throughout.

Kauri Cliffs



Matauri Bay Rd, Matauri Bay, NZNORTH

New Zealand

Region: Northland



Kauri Cliffs is one of those surreal golf experiences that avid golfers should experience at least once in their lifetime. Fifteen holes view the Pacific Ocean, six of which are played alongside cliffs which plunge to the sea. The beautiful inland holes wind through marsh, forest and farmland.

The New South Wales Golf Club



Botany Bay National Park, 101 Henry Head Lane, La
Perouse, NSW, 2036
Australia
Region: Sydney



The NSW Golf Club is rated in the top 50 golf courses in the world. In fact, it is the only Sydney Course rated in the top 100 best golf courses listing. The character of the course is unique, a links style course set amongst the hills and valleys that hug the rugged Pacific Ocean coastline boasting magnificent ocean views as backdrop.

Barnbougle Dunes Golf Links



425 Waterhouse Road, Bridport, TAS, 7262
Australia
Region: Tasmania (Launceston, Hobart, King Island)



Barnbougle Dunes Golf Links is the creation of a small group of dreaming golfers who saw the potential to build the most amazing golf course on the small island of Tasmania a short jump from the mainland of Australia. The golf course meanders through towering dunes and along the beach, where the roar of the ocean and a salty breeze will embrace golfers, plotting their way around one of the world's most natural golf courses.

Barnbougles Lost Farm



Waterhouse Road, Bridport, TAS, 7262
Australia

Region: Tasmania (Launceston, Hobart, King Island)



Lost Farm complements the natural landscape in which it is located. Featuring 20 holes, all of which are playable in any one round, the course layout tracks along the coast and inland amongst sand dunes. Strategic bunkering and undulating greens, combined with wide fairways make for a course which offers an exciting challenge for all golfers.

Accommodation

Mangapapa Petit Hotel



Napier Road, Hawkes Bay, NZNORTH, 4172
Australia
Region: Hawke's Bay

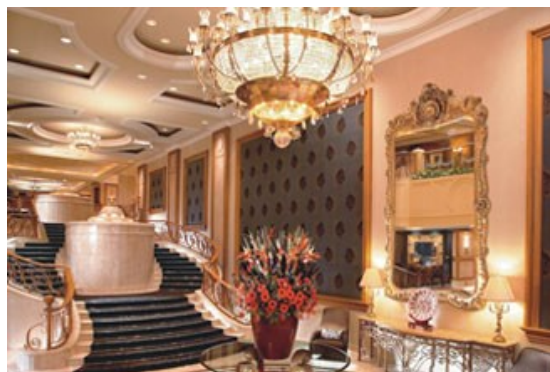


Mangapapa Petit Hotel was originally built in 1885 and is regarded as one of Hawke Bays most prestigious properties. Located on 20 acres of lush, manicured gardens, the homestead has recently undergone an extensive refurbishment bringing more modern and luxurious facilities to the hotel.

The Langham, Melbourne



1 Southgate Avenue, Southbank, VIC, 3006
Australia
Region: Melbourne City and Suburbs



The Langham, Melbourne affords five star service and quality in a five star location - the south bank of the Yarra River. Nestled on the south bank of the Yarra River, the hotel is within easy reach of the city's business district, fashion, shopping, sport, parks and gardens, al fresco restaurants, cafes and nightlife.

Australia and New Zealand | 17 day Sampler

Rosewood Kauri Cliffs



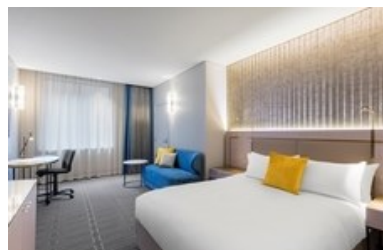
Tepane Tablelands, Bay of Islands, NZNORTH
New Zealand
Region: New Zealand



Kauri Cliffs consists of eleven outlying guest cottages, each with two guest suites providing twenty-two accommodation units at Kauri Cliffs.

Radisson Blu Plaza Hotel

27 O'Connell Street, Sydney, NSW, 2000
Australia
Region: Sydney



Enjoy staying within walking distance of popular Sydney attractions like Circular Quay, the Royal Botanical Gardens and the Sydney Harbour Bridge. Located just off the hotel lobby, the Fax Bar is the perfect setting to join friends or colleagues for a classic cocktail. Discover enticing entrees on chef Brent Savage's innovative menu served in the refined setting of our award-winning restaurant

Barnbougle Lost Farm



Waterhouse Road, Bridport, TAS, 7262
Australia

Region: Tasmania (Launceston, Hobart, King Island)



Barnbougle Lost Farm has two types of accommodation. The Queen Suites are an open plan hotel style room with a queen size bed, bathroom, tea and coffee making facilities. The Double Queen Suites are an open plan hotel style room with 2 queen size beds (in the same room), tea and coffee making facilities and a central bathroom. Both room types have views over the spectacular golf course or pristine Andersons Bay.

Australia and New Zealand | 17 day Sampler



About Us

GOLFSelect is a **golf holiday** specialist. Our relationships with Australia's best golf courses, plus our extensive international network of golf travel partners, allows us to organise unique and never-to-be-forgotten golf holidays both within **Australia** and around the **world**.